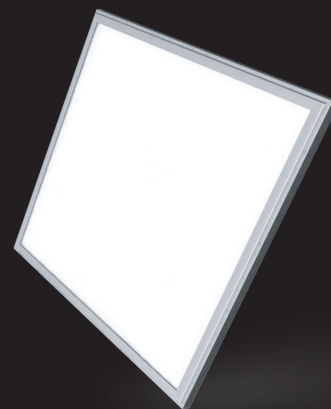


# PROLIGHT

BASIC+



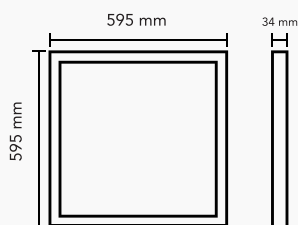
## DATA SHEET

### BACKLIT PANEL LIGHT 6000K PROLIGHT+

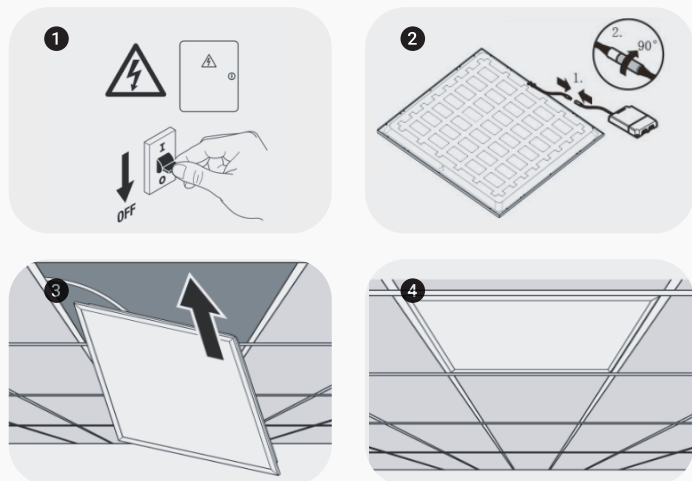
#### DESCRIPTION :

Back-Lit LED panel light offer a sleek, modern ambience to commercial buildings. Smooth, even lighting creates a “skylight” experience, while different color temperature options help to create the perfect environment to support a productive workspace.

Back-Lit LED panel light is a long-lasting, and easy-to-install solution for providing quality light distribution in offices, schools, and other commercial applications. Their thin, lightweight design features provide easy installation in both retrofit and new construction applications.



#### INSTALL:



ITEM	FEATURES
SKU	PRGLMBPL6060A40W6000K
Led	SMD 2835
Driver	Philips flicker free
Instal	Surface Mounted
Size	595 x 595 x 34 mm
Power	40w
Protection rating	IP 40
CRI	>80
Input	220 - 240v 50-60Hz
Beam angle	120°
Lumens	120lm/± 5%
CT	6000k
Operating temperature	-20°C ~ -50°C
Application	Residential   Commercial   Administrative & Office
Certificate	CCC, CE, RoHS, SAA, SASO

