



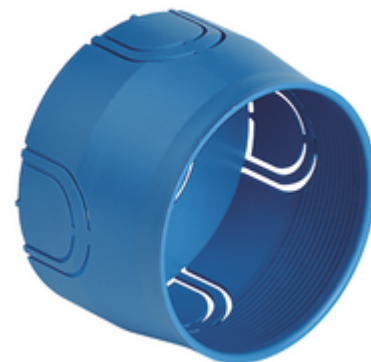
## Flush mounting box ø 60mm light blue: Flush mounting box ø 60mm light blue

**V71001**

### Flush mounting box ø 60mm light blue

ø 60 mm flush mounting box, (Glow Wire 650 °C), for masonry walls, light blue

- Plenty of space of internal wiring
- Knockouts designed for the insertion of pipes with various cross-sections
- Accessories available: anti-mortar covers and decorative covers



### Product Status

3 - Active

### Minimum order quantity

10 NR

You may also be interested in



V71001.AU - Flush mounting box ø 60mm light black

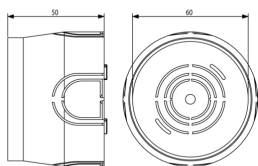


V71632 - Flat cover 2M

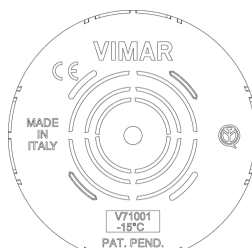


V71011 - Antimortar cover for ø60mm box yellow

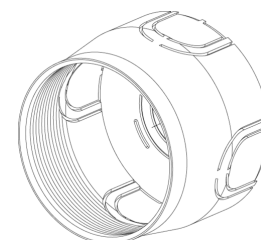
### Drawings



Space view



Backside view



3D View

## Technical data

- **Class group:** Connection material (electrotechnical)
- **Class:** Box/housing for built-in mounting in the wall/ceiling
- **Mounting method:** Flush-mounted
- **Shape:** Round
- **Construction type:** Device connection box (round/square)
- **Model:** Other
- **Provided with revolving ring:** No
- **Couplable:** Yes
- **Equipped with:** None
- **Diameter:** 60 mm
- **Length:** 60,00 mm
- **Width:** 60,00 mm
- **Depth:** 0,00 - 50,00 mm
- **Inner depth:** 50,00 mm
- **For number of electric fittings:** 2
- **Mounting switching equipment:** Spread
- **With screws:** No
- **Housing feed-through by break-out opening:** Yes
- **Housing feed-through by seal membrane:** No
- **Housing feed-through by nozzle:** No
- **Housing feed-through by step membrane:** No
- **For tube diameter:** 20/25 mm
- **Pipe locking:** No
- **Pipe locking optional:** No
- **Inlet from the rear:** Yes
- **Number of inlets:** 5
- **Number of included spouts:** 0
- **Material:** Plastic
- **Halogen free:** Yes
- **Surface protection:** Untreated
- **Colour:** Blue
- **Degree of protection (IP):** IP00
- **Cover model:** None
- **Transparent cover:** No
- **Cover attachment:** Screwed
- **Sealable:** No
- **Circuit integrity:** None
- **With screening:** No
- **Air tight:** No
- **Max. conductor cross section:** 0
- **Number of poles of the clamp:** 0
- **Clamp position fixed:** No
- **Luminaire hook mounting:** No
- **Nozzle:** None
- **Special application:** None

## Certifications

- 00. CE Marking - EU
- 01. IMQ - Italy ([download](#))
- 43. UKCA mark - Great Britain
- 96. Electrotechnical expert ([download](#))

## Packaging



**Code** 8007352079281  
**Quantity** 1 NR  
**Dim.** 6x6x5 [cm]  
**Weight** 15.2 [g]



**Code** 8007352083059  
**Quantity** 10 NR  
**Dim.** 25x14x7 [cm]  
**Weight** 159.13 [g]



**Code** 8007352111080  
**Quantity** 200 NR  
**Dim.** 59x38.5x30 [cm]  
**Weight** 4,144.67 [g]

## Legal

Vimar reserves the right to change at any time and without notice the characteristics of the products reported. Installation should be carried out by qualified staff in compliance with the current regulations regarding the installation of electrical equipment in the country where the products are installed. For the terms of use of the information on the product info sheet see [Conditions of Use](#).