



Frame 2M +claws 71mm: Frame 2M +claws 71mm

14602

Frame 2M +claws 71mm

2-module mounting frame, with claws, for \varnothing 60 mm mounting boxes, modular, 71 mm distance between centres

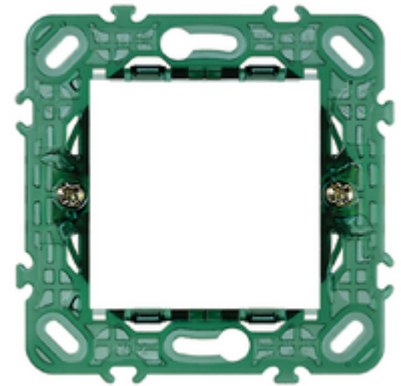
- The transparency helps the installation and the wiring of devices
- The honeycomb structure gives structural strength
- The slots in the corners enable fixing to the panel
- The hooking teeth encourage fixing in series for the installation of multiple modules

Product Status

3 - Active

Minimum order quantity

50 NR

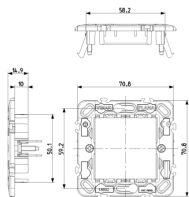


You may also be interested in

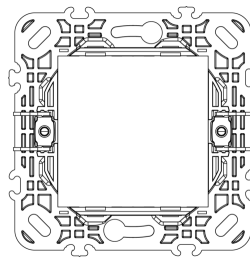


14602.C - Frame protection
2M Plana/Arké

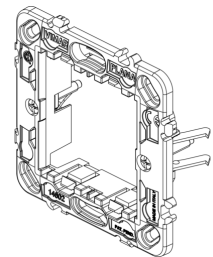
Drawings



Space view

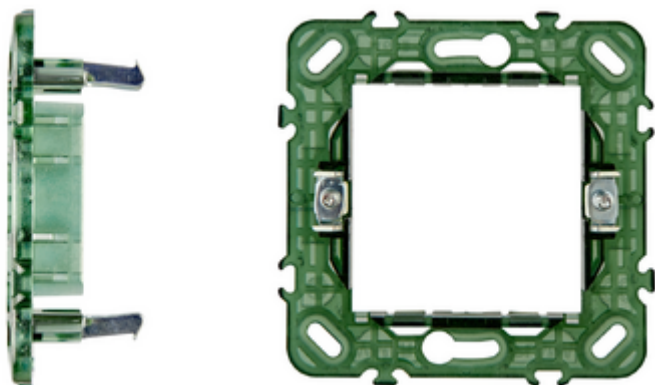


Backside view



3D View

Gallery



Technical data

- **Class group:** Domestic switching devices
- **Class:** Holder for modular domestic switching devices
- **Model:** Flush-mounted
- **Mounting method:** Mounting with claw
- **Mounting method of the module inserts:** Front side
- **Mounting direction:** Horizontal and vertical
- **Number of modules horizontal (module system):** 2
- **Number of modules vertical (module system):** 1
- **With built-in installation box:** No
- **With screws:** No
- **Suitable for mounting in round junction box 60 mm:** Yes
- **Flush-mounted installation:** Yes
- **Suitable for subfloor installation duct box:** No
- **Suitable for wall duct:** No
- **Suitable for mounting on DIN-rail 35 mm:** No
- **Material:** Plastic
- **Material quality:** Thermoplastic

Certifications

- 00. CE Marking - EU
- 01. IMQ - Italy ([download](#))
- 29. QCERT - Colombia
- 43. UKCA mark - Great Britain
- 96. Electrotechnical expert ([download](#))

Packaging



8 007352 108929

Code 8007352108929
Quantity 1 NR
Dim. 7,4x7,4x1.5 [cm]
Weight 21.4 [g]



8 007352 108936

Code 8007352108936
Quantity 50 NR
Dim. 28,4x24,4x11.9 [cm]
Weight 1,234.67 [g]



8 007352 361423

Code 8007352361423
Quantity 300 NR
Dim. 59,5x38,5x26.5 [cm]
Weight 8,208.02 [g]

Legal

Vimar reserves the right to change at any time and without notice the characteristics of the products reported. Installation should be carried out by qualified staff in compliance with the current regulations regarding the installation of electrical equipment in the country where the products are installed. For the terms of use of the information on the product info sheet see [Conditions of Use](#).